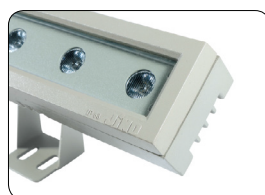
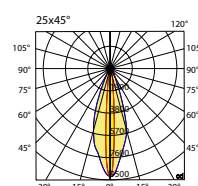
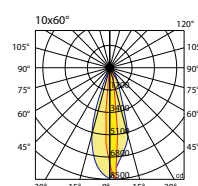
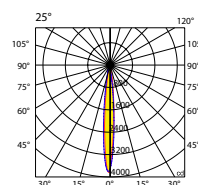




OLD-OX8



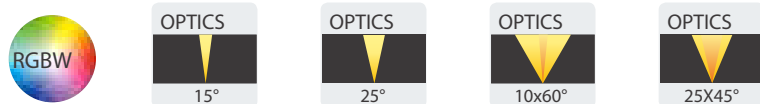
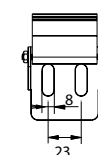
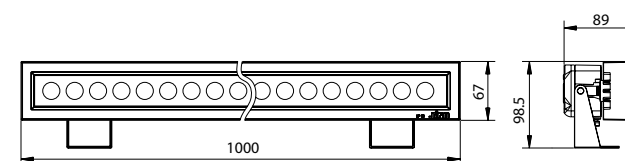
Photometric data:



ORION INTERNATIONAL Features

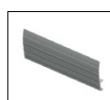
- It's suitable for building facades, bridges, parks, squares, etc.
- Exquisite anti-UV surface coating for outdoor environment
- High thermal conductivity Aluminum-6063-T5 lamp body ensures the heat dissipation of LED and extends product's life
- Whole structure waterproofing design technology
- 5mm safety toughened glass with high transmittance

ORION INTERNATIONAL Product Size



ORION INTERNATIONAL Performance parameter	
LED Light Source: Cree, Lumileds, Osram, Epistar	Effects: single color, full color, gradient, chasing, flowing
Color Temperature: Single color, RGB, RGBW, RGBA, RGB+W	Protection Grade: IP65
LED CRI: ≥ 80 R9>0	Electrical Safety Grade: Class I / III
Lifespan: ≥ 50000 h	Voltage: AC220V 50/60Hz DC24V
Beam Angle : 15~110° 10x30° 10x60° 25x45° (Optional)	Current: constant current drive
Rotation Angle: 210°	Working Temperature: -35°C ~ +45°C
Control Mode: ON/OFF、DMX512	Mounting Bracket: customizable

ORION INTERNATIONAL Optional accessories



Glare-shield



Lens Hood

ORION INTERNATIONAL Product number

Model	Power	Input Voltage	LED Quantity	Single LED Power	Color
OLD-OX8-D	24~54W	AC220V/DC24V	24/30/36	1~3W	single color
OLD-OX8-R	24~60W	AC220V/DC24V	24/30/36	1~4W	full color